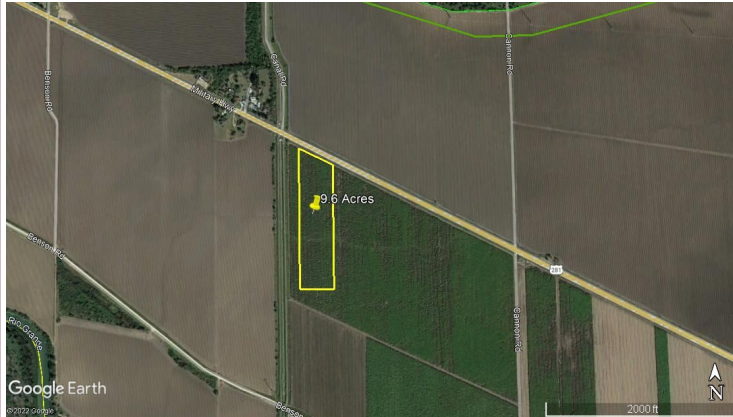


Raw Land

For Sale: \$149,000

San Benito, Tx



Site Specifications:

- **Address:** Hwy 281 approximately 3.6 miles west of FM 509 and approximately 2 miles west of Rangerville Road
- **Acreage:** 9.6 Acres
- **Price/Acre:** \$15,520
- **Frontage:** Approx. 335 of frontage on HWY 281
- **Access:** Paved Road
- **School District:** Santa Maria I.S.D.
- **Utilities:** Electricity and Military Highway water along Hwy 281
- **Topography:** Level, open
- **Suitable Use:** Residential, Commercial, Agriculture
- **Directions:** From FM 509 (Paso Real), turn right and head west on Hwy 281 approximately 3.6 miles to property on left side of road.

For Additional Information

Please Contact:

Waters Realty, Inc.
Phone: 956-350-3333
Fax: 956-350-3111

Website: www.watersrealtyinc.com



Remarks:

9.6 acres of farmland on Highway 281 approximately 3.6 miles west of FM 509. Dimensions are approximately 335 wide by 1477 feet deep. Water and power located at the property. Military Highway Water Supply. Located in Flood zone X (aka C). Property is currently leased for agricultural production.

Financing:

- Cash/Conventional

Waters Realty, Inc.